

SENTINEL COMPONENTS



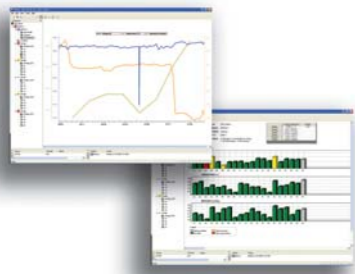
Sentinel:

- One Sentinel per monobloc
- Measures the voltage, temperature, and impedance of the bloc
- Sentinel Voltage range, from 0.9 to 16V
- DIN rail mounting



S-Box:

- Communicates with up to 254 Sentinels
- 6 strings/current transducers + ambient temperature probe
- LAN and internet connection
- Different «modes» of operation, reflecting different battery status: Normal / Discharge / Recharge
- Alarms & Weekly reporting



Cellview Net:

- Easy graphical analysis and historical interpretation
- History and trend graphics
- Real time date display
- Alarms dashboard

Accessories:

- S-Bus Converter
- Cables & Washers
- Current Transducers

Distributor

LEM International SA
8, Chemin de Aulx, CH-1228 Plan-les-Ouates
Tel. + 41/22/706 11 11, Fax +41/22/794 94 78
e-mail: lsa@lem.com
www.lem.com

Publication CH 29103 (02.10 • 500 • POT)

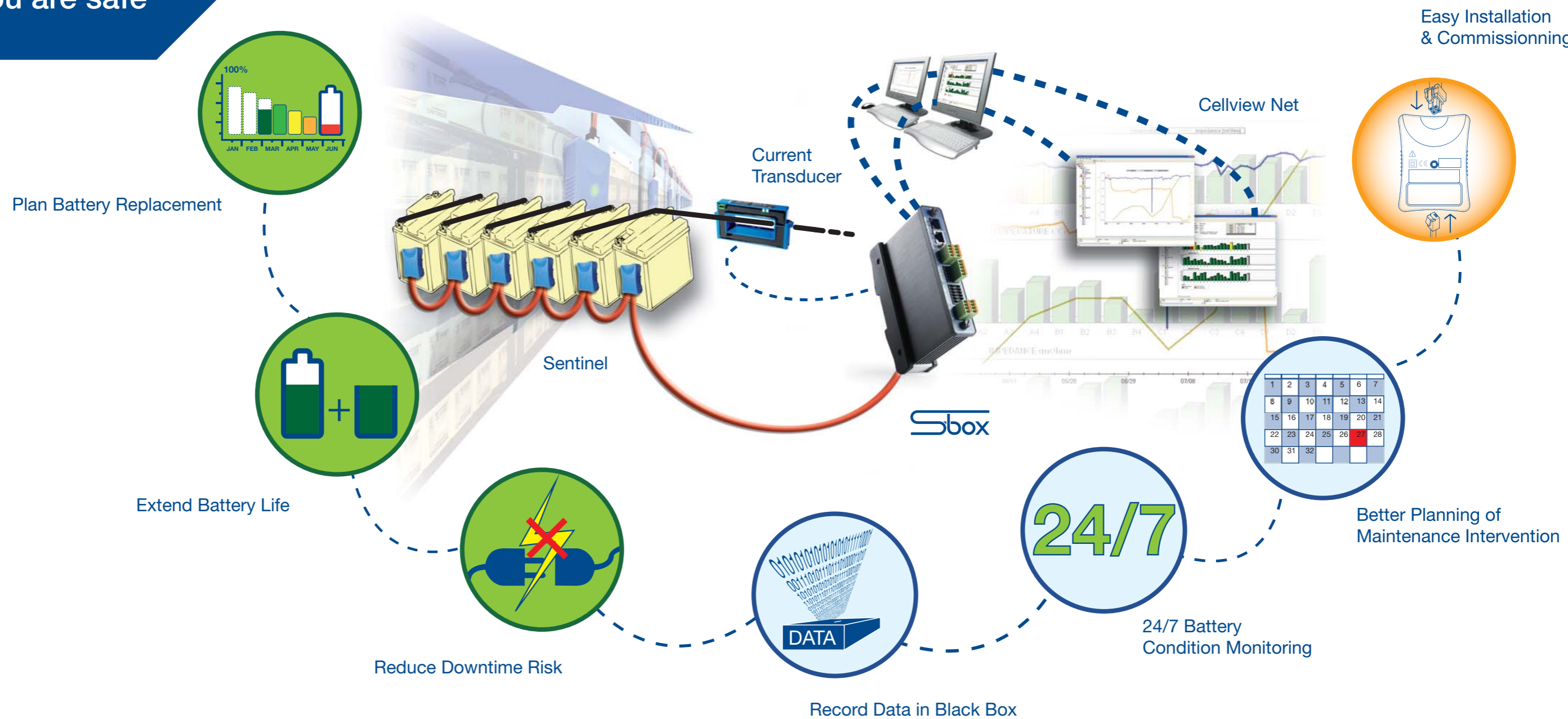
Commercial Information

SENTINEL Battery Monitoring Solution






Sentinel

"Know you are safe"



Applications :

- Stand-by VRLA and flooded batteries
- UPS: datacenters, hospitals, air traffic control
- Railway and trackside equipment
- Telecom DC system and infrastructures (mobile)
- Power generator & distribution
- Critical production process plant (e.g. semiconductors)

-  End User Benefits
-  Better Battery Maintenance Service
-  Quick Fit Installation